

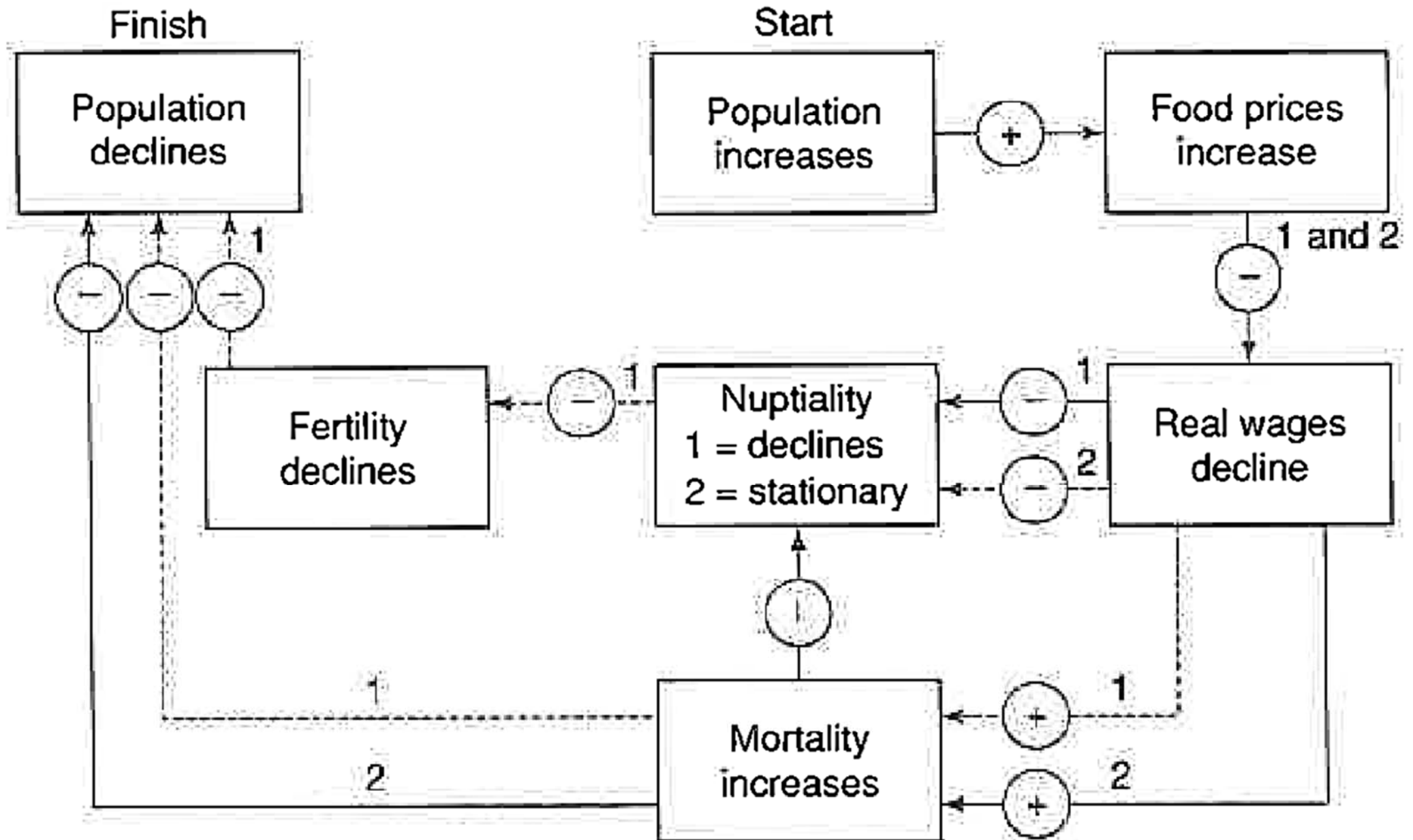
La teoria malthusiana

- 1 The primary resource is food. Its scarcity causes mortality to increase, slowing (or reversing) population growth and reestablishing equilibrium.
- 2 The law of diminishing returns is unavoidable. Cultivation of new land and intensification of labor in response to demographic growth add progressively smaller increments to production for each additional unit of land or labor.
- 3 Production or productivity increases resulting from invention or innovation provide only temporary relief, since any gains achieved are inevitably canceled out by demographic growth.
- 4 Awareness of the vicious cycle of population growth and positive checks may lead a population to check its prolificity (and so demographic increase) by means of nuptial restraint.

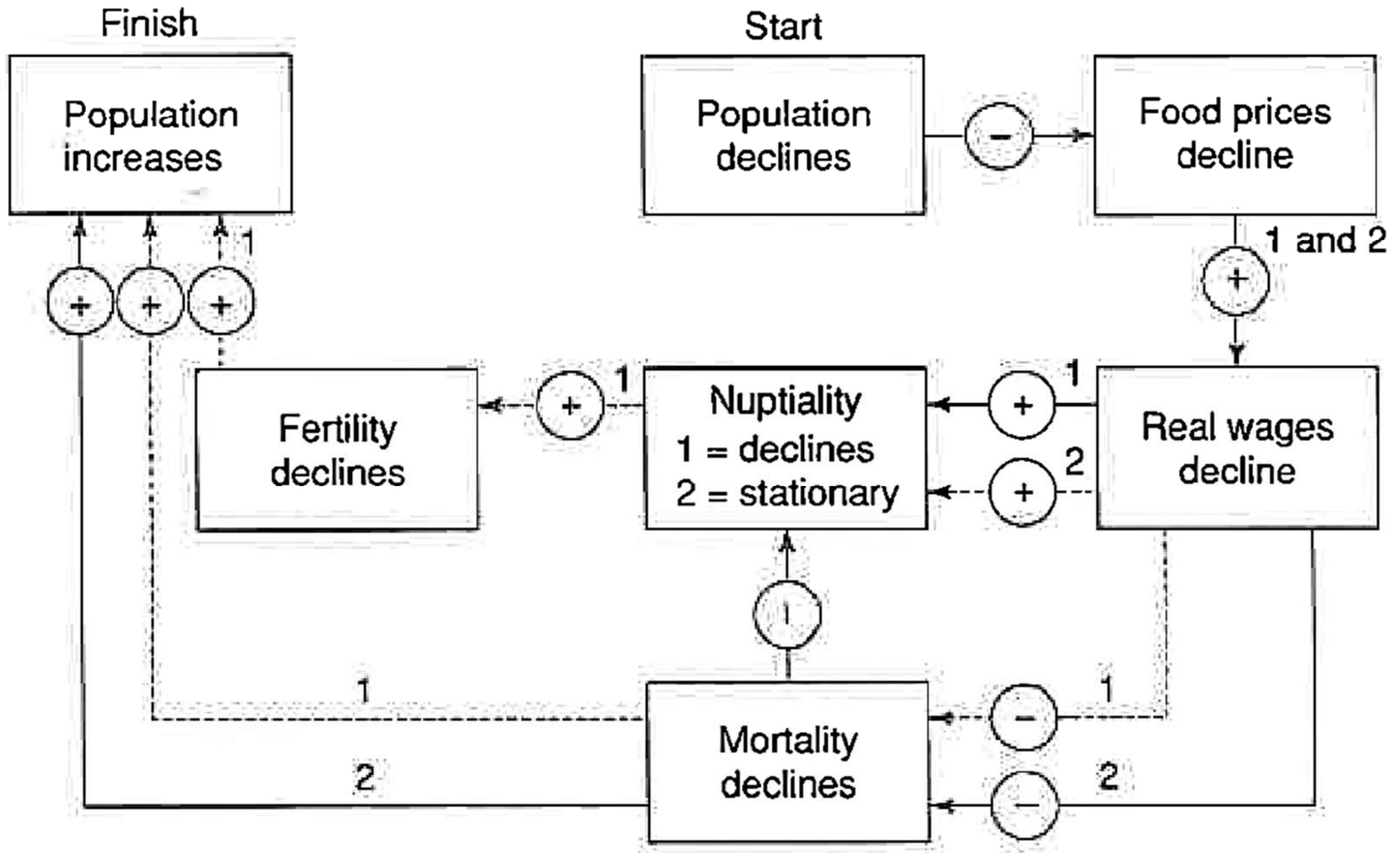
'+' = efecte positiu
'__' = relació forta

Expansió

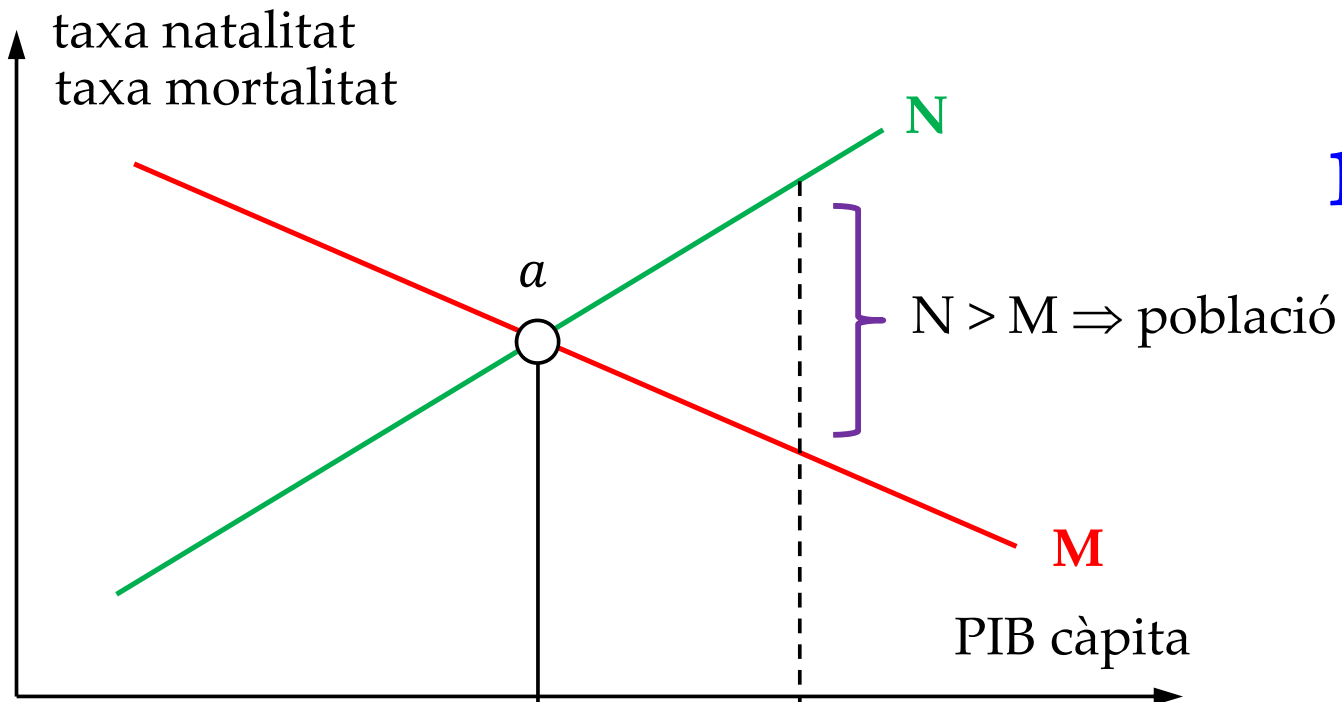
'-' = efecte negatiu
'--' = relació feble



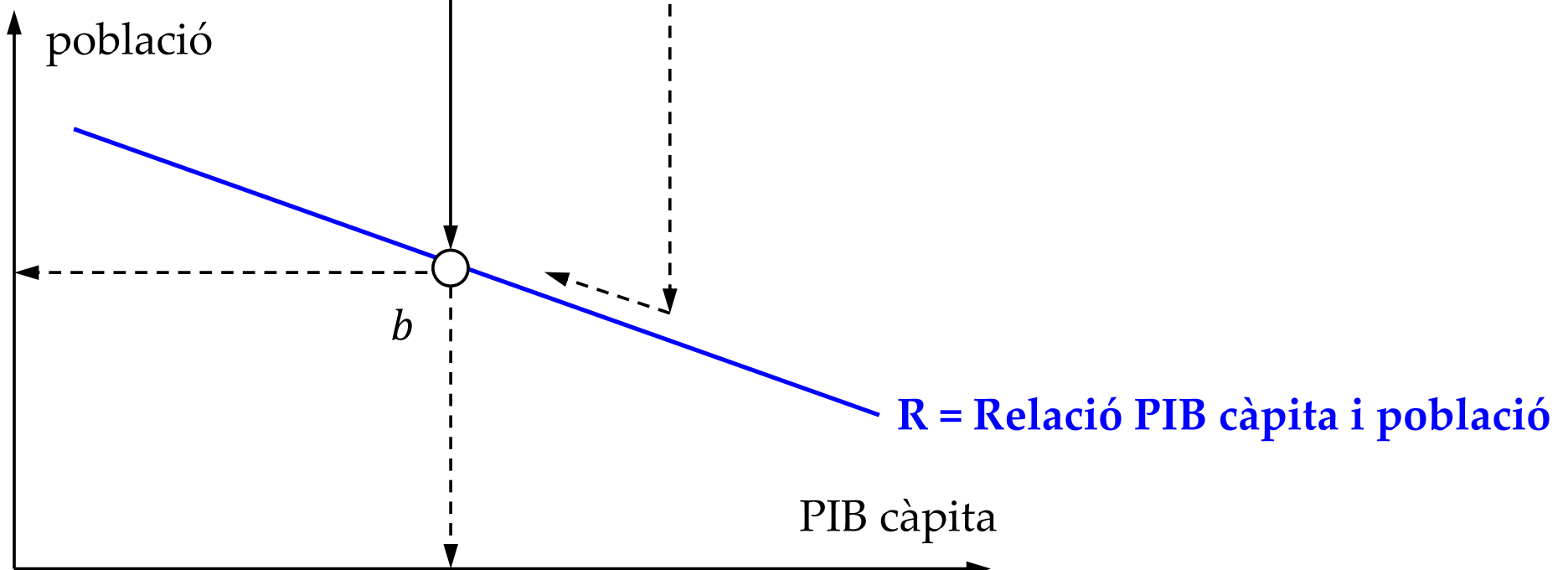
Contracció



Un model malthusià

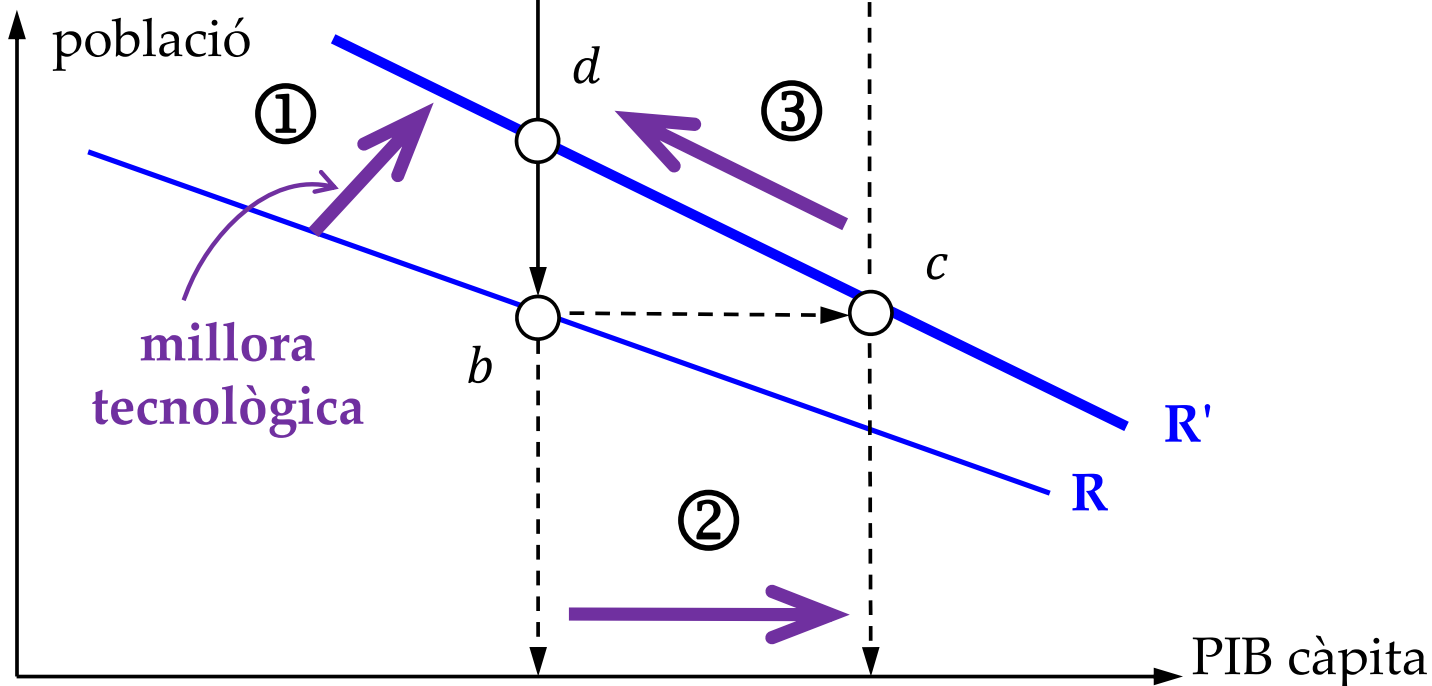
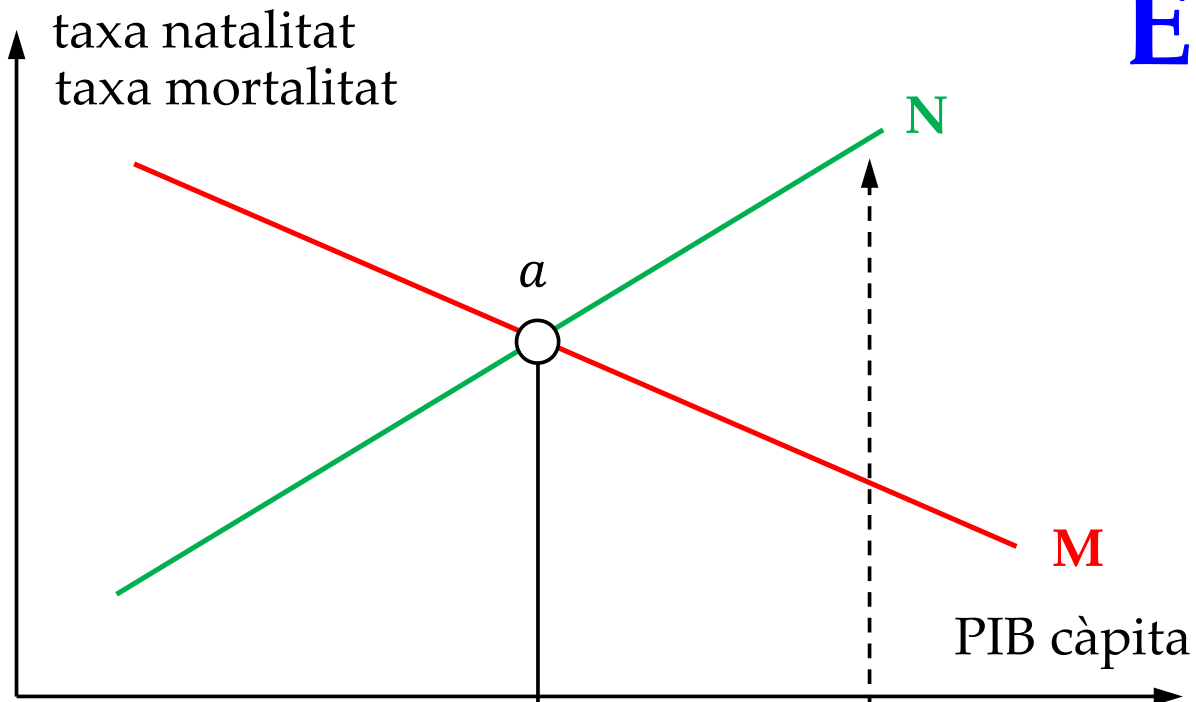


Gregory Clark (2007):
A farewell to alms:
A brief economic history
of the world, p. 22



El mecanisme malthusià

Gregory Clark (2007):
*A farewell to alms:
A brief economic history
of the world, p. 22*



El mite malthusià?

